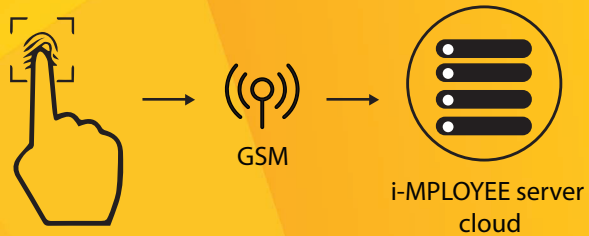
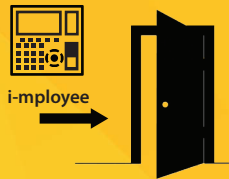


Unique Features



Real Time Attendance Updates

Access Control System



Use i-employee to regulate and monitor access to offices and restricted locations

Phone Call to Device



Call a device from any location and stay connected with your shop floor or office

SMS Alerts



Integration with CNIC reader



24/7 Customer Support

i-MPLOYEE Features

- High speed, energy efficient processor
- State of the art fingerprint reader
- User Capacity: 3,000 to 100,000 (Mode dependant)
- RFID/MiFare card reader
- Multi step authentication mode
- 3 inch large TFT display
- Multiple attendance modes
- Wireless and cabled communication (GSM/LAN/WiFi)
- Options for controlling devices and sensors integration
- Full tactile keyboard with navigation keys
- Internal Battery with backup of 8 Hours for power outages
- 5 x Programmable function keys
- User friendly graphical interface
- Audio call receiver
- Dual Storage
- 10 digit user ID and 4 digit PIN code
- Rugged design
- Designed for the Pakistani environment

i-MPLOYEE suited for all work environments



Banks



Offices



Hospitals



Gated Communities



Ware Houses



Factories



Shops & Retail stores



Hotels



Educational Institutions

www.i-mployee.com

©Copyrights 2015 TeReSol

Technological Research Solutions, Private Limited
House# 220-A, Street # 39, F-11/3, Islamabad- 44000, Pakistan
Tel: +92 51 2111315, 2111316, Fax: +92 51 8430644

www.teresol.com

Biometric Attendance & Reporting Solution

iMPLOYEE
Always Present

ATTENDANCE

ACCESS

COMMUNICATION

REPORTING

ALL IN ONE



Powered by
TERESOL
Technological Research Solutions

RCCI ICT company of the year 2015

Concept

i-MPLOYEE is a unique, comprehensive and innovative attendance, access and reporting system based on modern biometric and RFID technology. i-MPLOYEE offers one of a kind, on the go, plug-n-play solution which enables customers' flexibility to get attendance and access data from any temporary or permanent location through smart phone app or web portal.

i-MPLOYEE Advantages

- Standalone device - no need of dedicated computer to sync data
- Server communication through GSM (no networking needed)
- Multiple attendance modes
- Multiple communication modes
- Battery backup
- Data hosted on server cloud with full backup
- Over the air firmware upgrades
- Multi site data collection
- Data portability on all devices across a company
- Detailed reports and data analysis
- One year standard warranty

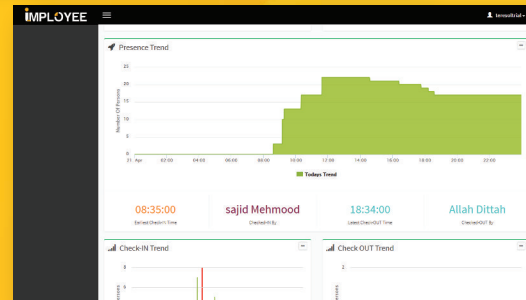
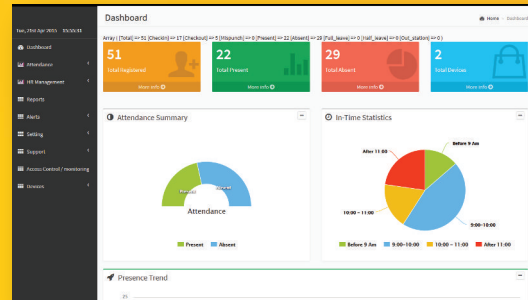


About Teresol

TeReSol is a research based turnkey solution provider specializing in the fields of communication, biometrics, image analysis, video processing, signal processing and networking using green energy solutions.

Using cutting edge technologies TeReSol provides both hardware and software customized solutions to the complex requirements of both private & public sector and emerging ICT markets. The solutions provided by TeReSol are thoroughly tested and validated based on user requirements.

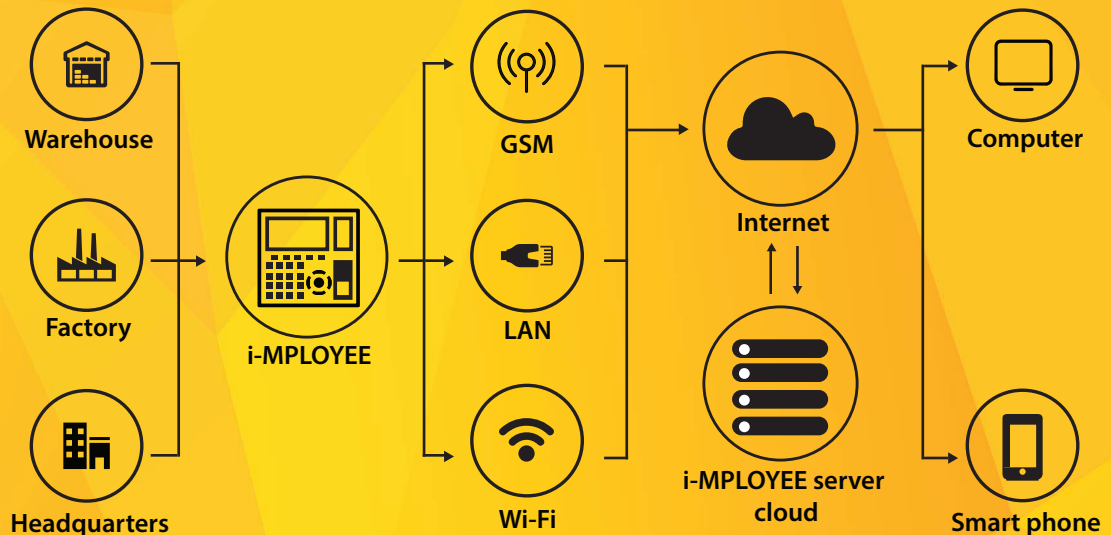
i-MPLOYEE Web Portal



Smartphone App for Realtime Information Access



i-MPLOYEE Environment



i-MPLOYEE can be installed anywhere in your premises

i-MPLOYEE is a Plug-n-play device and works with GSM network, LAN & Wi-Fi

Access Reports on website and anywhere on your smart phone through i-MPLOYEE app.